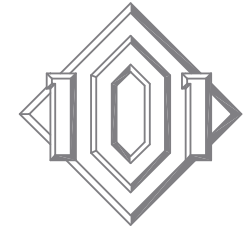
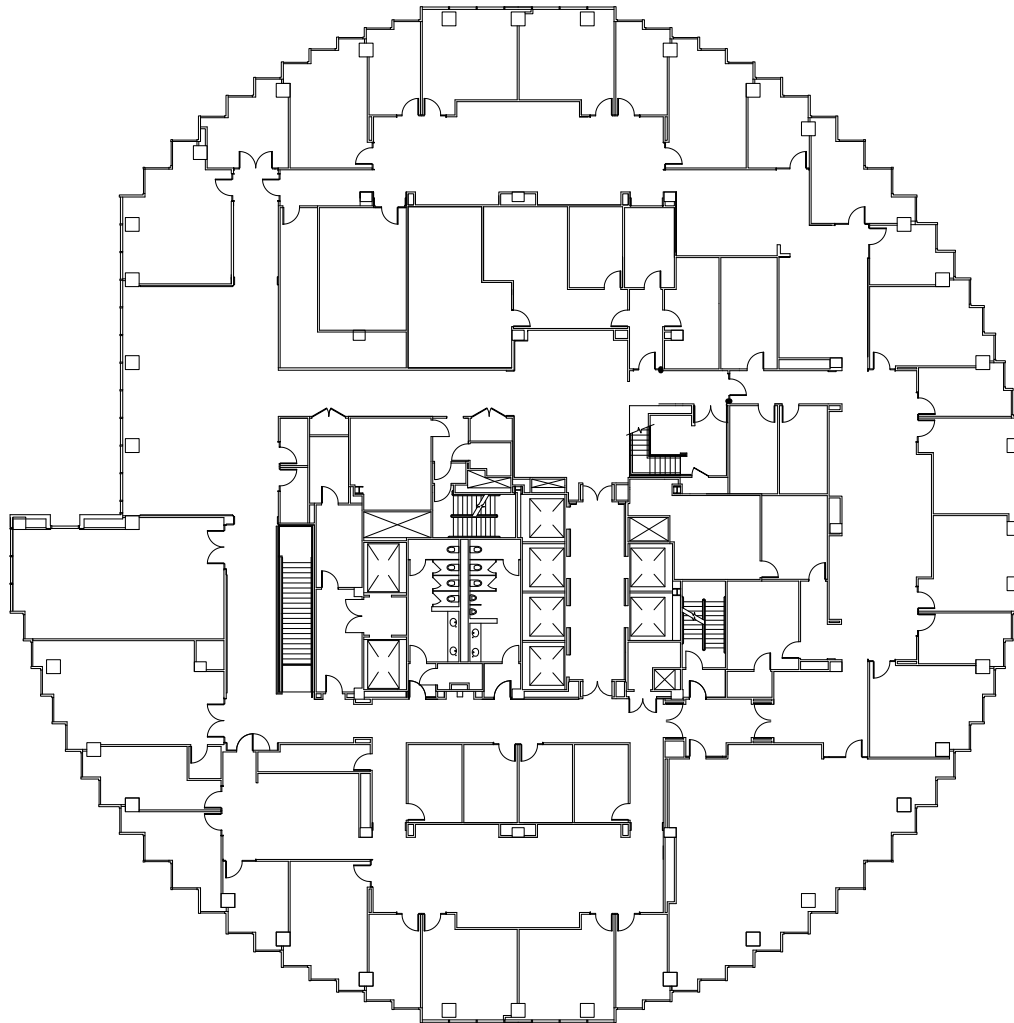


39/FL
25,633 sf



101 CALIFORNIA



As Built Plan

- Pre-built high-end law firm space
- 31 private offices & 7 conference rooms
- Part of a 76,036 contiguous sf block
- Exceptional panoramic views of the Golden Gate Bridge, Bay Bridge, Mt. Tam, Alcatraz & Pacific Ocean
- Available immediately

Contacts

David Eaton & Ryan Lowe
david.eaton@hines.com
ryan.lowe@hines.com
101 California Street, Suite 1000
San Francisco, CA 94111
415.982.6200
www.101california.com



Hines