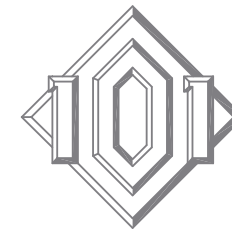
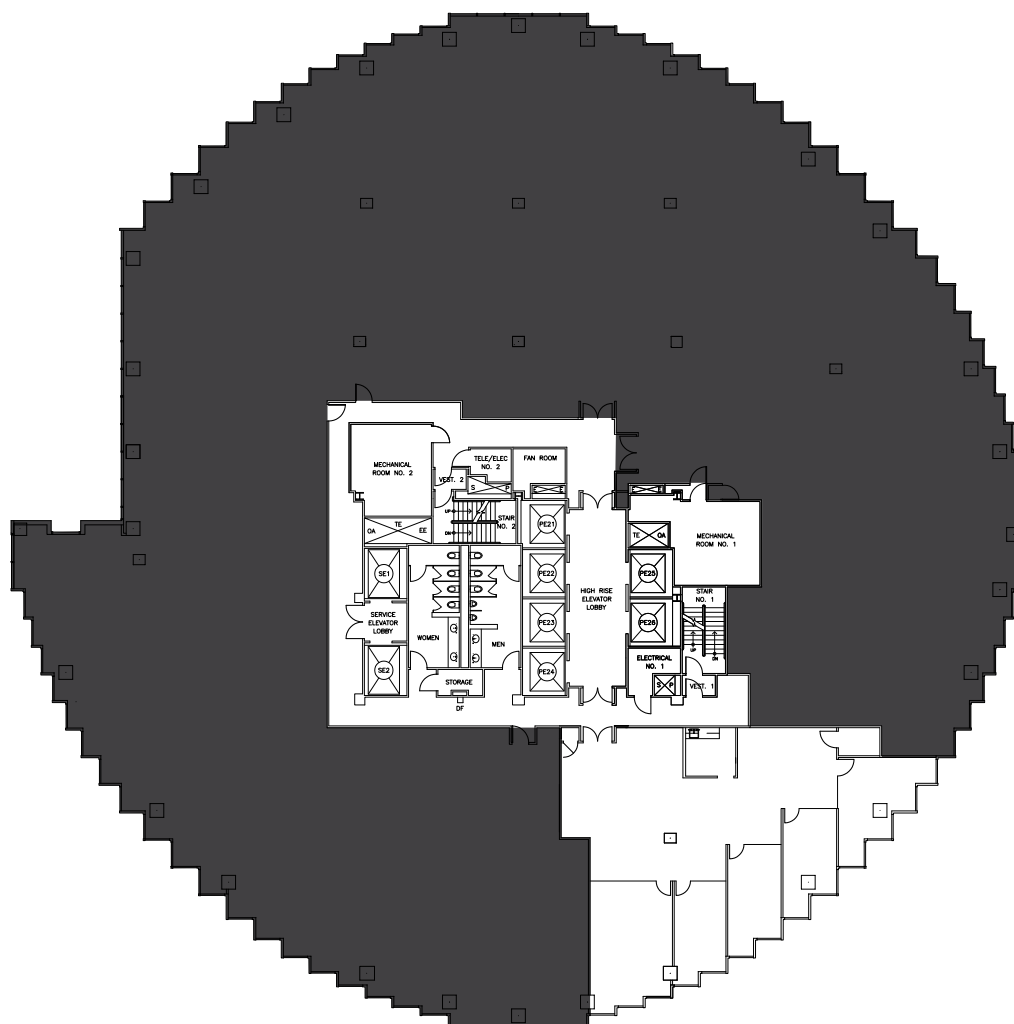


42/FL  
2,814 sf



101 CALIFORNIA



#### As Built Plan

- Planned pre-built suite underway
- Double-door identity off the elevator lobby
- 4 perimeter offices with glass fronts, 1 perimeter conference room with glass front, kitchen with sink and upper and lower cabinets, reception area
- Views of the Bay, Bay Bridge, AT&T Park, Potrero Hill, Twin Peaks, and Pacific Ocean
- Available January 1, 2015

#### Contacts

David Eaton & Ryan Lowe  
david.eaton@hines.com  
ryan.lowe@hines.com  
101 California Street, Suite 1000  
San Francisco, CA 94111  
415.982.6200  
www.101california.com



**Hines**