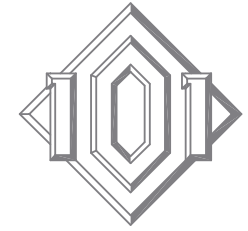
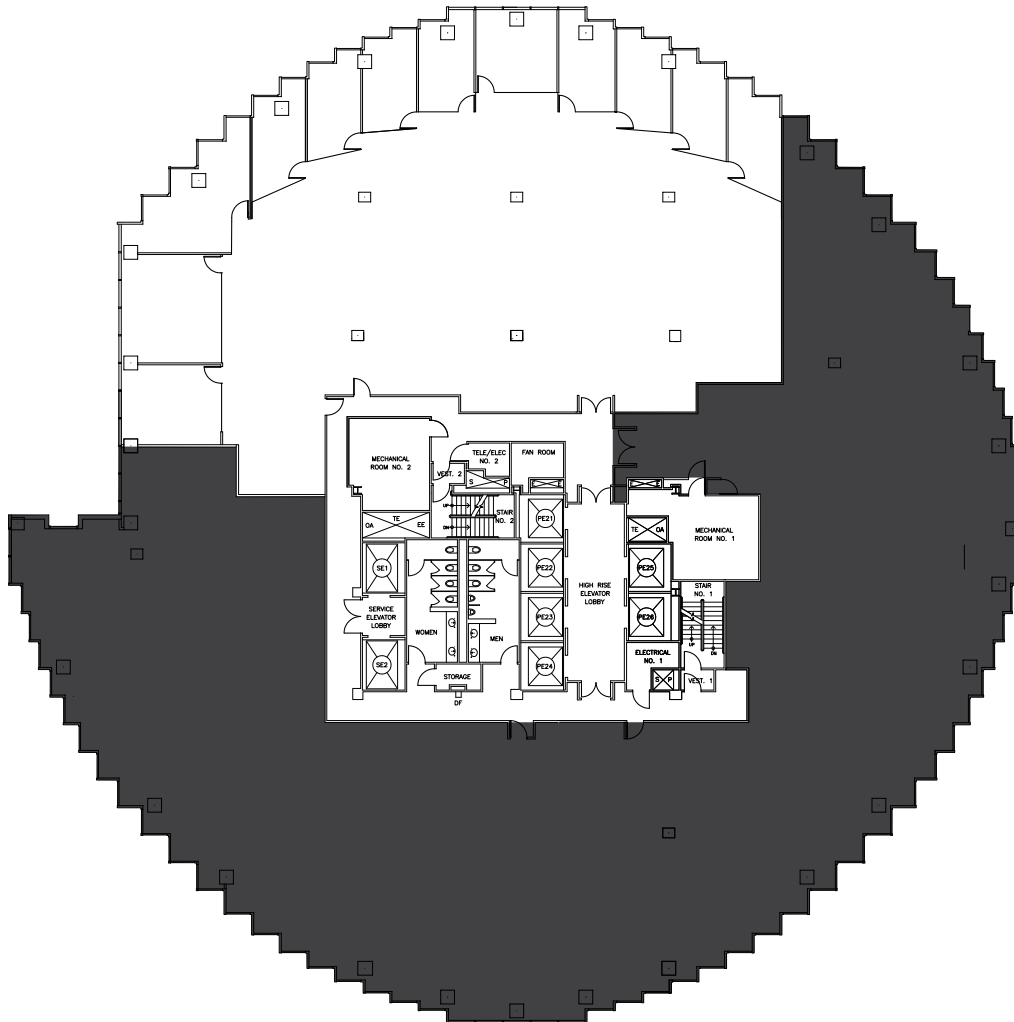


42/FL
9,263 sf



101 CALIFORNIA



Demising Plan

- Highly improved pre-built space
- 11 highly improved perimeter offices with glass fronts, 1 perimeter conference room with glass front
- Panoramic views of the Golden Gate Bridge, Mt. Tam, Alcatraz, and Coit Tower
- Double door identity off elevator
- Available immediately

Contacts

David Eaton & Ryan Lowe
david.eaton@hines.com
ryan.lowe@hines.com
101 California Street, Suite 1000
San Francisco, CA 94111
415.982.6200
www.101california.com



Hines